

Greening Richmond Public Libraries

IMPROVING THE HEALTH OF THE JAMES RIVER BY REDUCING STORMWATER POLLUTION

West End Branch Library

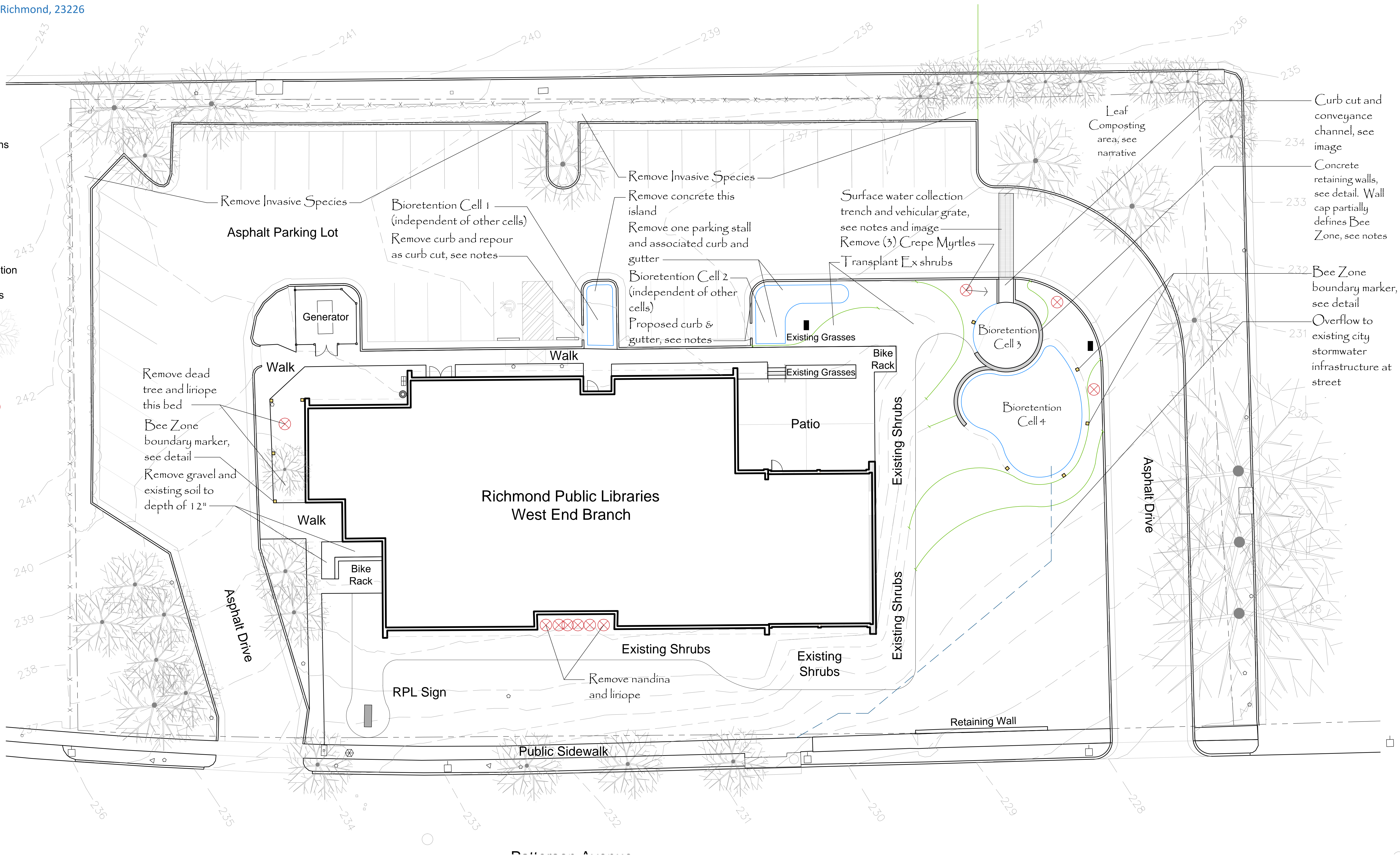
5420 Patterson Avenue, Richmond, 23226

Legend:

- Downspout locations
- Water Meter
- Gas Meter
- Electric Meter
- Site Pole Lights
- Irrigation Valve
- Sign
- Utility Pole
- Proposed Bioretention Basins
- Proposed Contours

Existing Trees & Shrubs To Be Preserved:

Existing Shrubs and Trees To Be Removed:

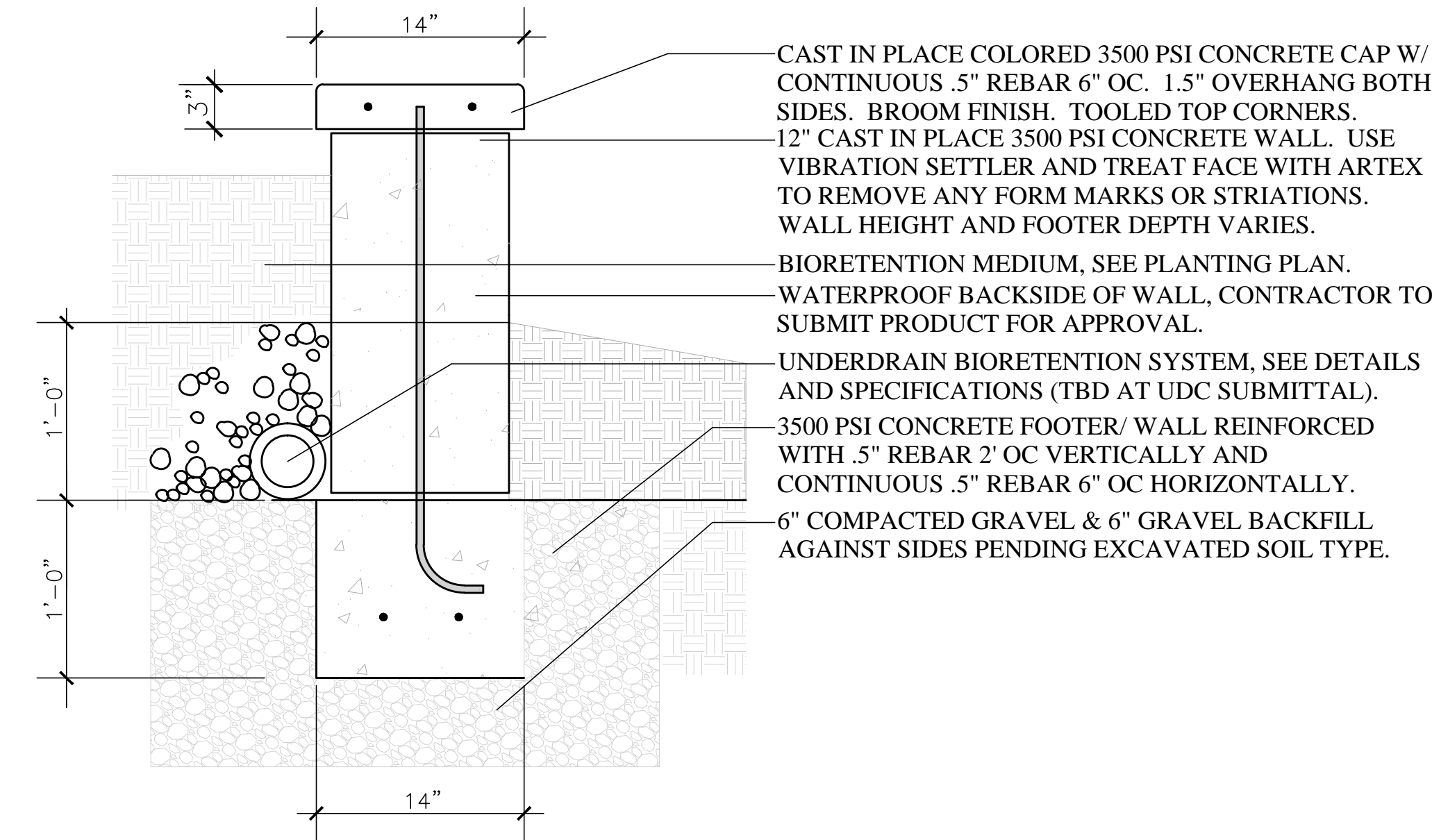


Greening Richmond Public Libraries

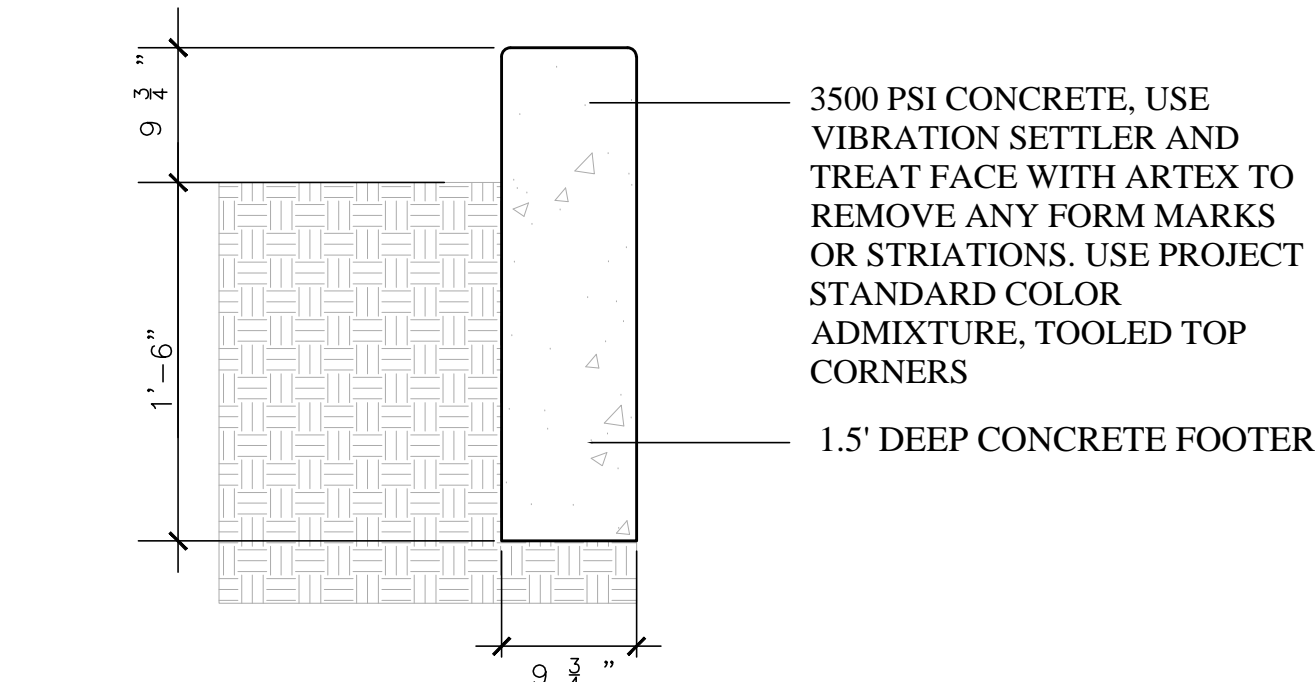
IMPROVING THE HEALTH OF THE JAMES RIVER BY REDUCING STORMWATER POLLUTION

West End Branch Library

5420 Patterson Avenue, Richmond, 23226



Concrete Retaining Wall
NO SCALE



Bee Zone Boundary Markers
NO SCALE



Trench grate, see notes for specifications

NOTES

THE FOLLOWING ELEMENTS SHALL BE CONSISTENT BETWEEN LIBRARY BRANCHES IMPROVED UNDER THIS ENDEAVOR: ALL INTRODUCED METAL COMPONENTS INCLUDING SIGN FRAMES (TEXTURED BROWN POWDER COAT), CONVEYANCE CHANNELS (CHALET STONE IN MORTAR BED), BEE ZONE PERIMETER MARKING (BROOM FINISH CONCRETE WITH COLOR ADMIXTURE):



SEE UDC SUBMISSION APPLICATION FOR WESTOVER HILLS BRANCH FOR EXAMPLE OF INTERPRETIVE SIGN GRAPHICS AND FRAME DETAILS.

THE TRENCH GRATES SHALL BE BAR GRATING ITEM 6601 143632 BY MCNICHOLS STEEL, (ADA COMPLIANT PRODUCT WHEN DIRECTION OF BEARING BARS INSTALLED PERPENDICULAR TO DOMINANT DIRECTION OF TRAVEL, VEHICULAR RATED). PROVIDE FRAME IN MATCHING RECTANGULAR BAR AND L BRACKETS WITH COATED EMBEDDED ANCHORS FOR MOUNTING TO CONCRETE CONVEYANCE CHANNEL LIP. USE TYPE 304 BRACKET, GFSS-1 SADDLE CLIP. (3) PER L BRACKET TO SECURE GRATES. ALL COMPONENTS POWDER COATED TEXTURED BRONZE TO MATCH SPILLWAY AND SIGN.

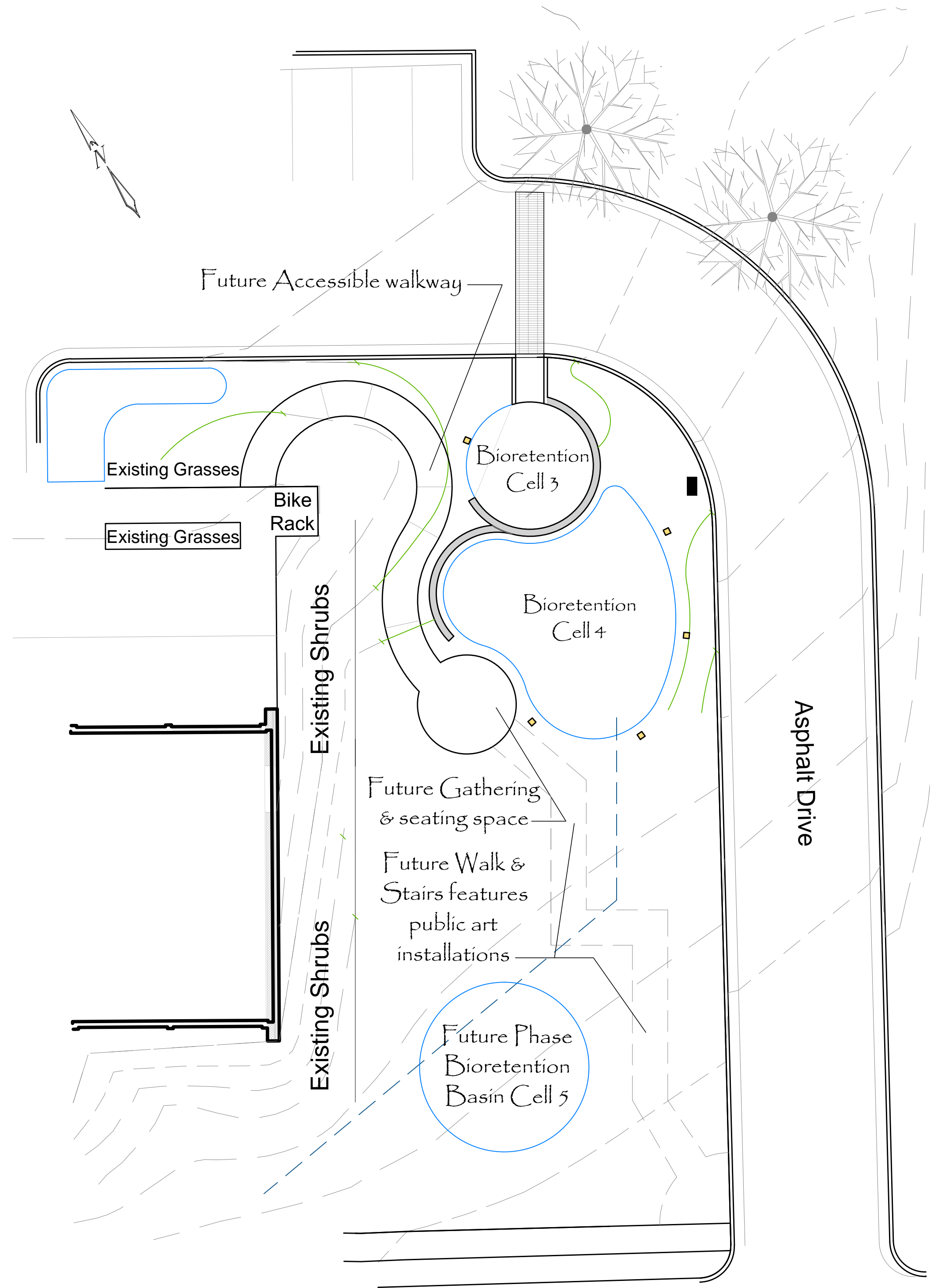
THE PROPOSED CURB AND GUTTER AROUND THE BIORETENTION BASINS IN THE PARKING LOT WILL MATCH THE USING CITY STANDARD CONSTRUCTION DETAILS FOR CURB AND GUTTER. CURB CUTS WILL BE LOCATED AS SHOWN TO RECEIVE RUNOFF:



Conveyance channels: ornamental gravel in 4" mortared bed, finish surface with acid wash to clean stone. Use 40% 3-5" stone and 60% 1-3" stone.



Plant Schedule				
Code	Botanical Name	Common Name	Quantity	Size
AA	Amelanchier arborea	Serviceberry	2	6-8'
Mix A	Asclepias incarnata	Swamp Milkweed	22	1 Gal
CA	Carpinus caroliniana (standard form)	American Hornbeam	4	8-10'
EP	Echinacea purpurea 'PowWow'	Purple Coneflower	11	1 Gal
Mix A	Hibiscus moscheutos 'Disco Belle Red'	Rosemallow	20	1 Gal
Mix A	Iris iousiana 'Black Gamecock'	Sweetflag	20	1 Gal
Mix A	Juncus effusus 'Blue Arrow'	Bog Rush	20	1 Gal
JV	Junierpus virginiana	Redcedar	7	10-12'
MV	Magnolia virginiana	Sweetbay Magnolia	8	15 Gal
NS	Nyssa sylvatica	Tupelo	3	2" Cal
PH	Panicum virgatum 'Heavy Metal'	Switch Grass	3	3 Gal
PV	Panicum virgatum 'Shenandoah'	Switch Grass	155	3 Gal
PS	Penstemon sp 'Red Rocks'	Beard Tongue	58	1 Gal
PO	Platanus occidentalis	Sycamore	1	2.5" Cal
QC	Quercus coccinea	Scarlet Oak	7	2.5" Cal
RF	Rudbeckia fulgida 'Little Gold Star'	Black-eyed Susan	35	1 Gal
TD	Taxodium distichum	Baldcypress	5	8-10'
TS	Tradescantia virginiana	Spiderwort	13	1 Gal



Future Phase Construction (not submitted for UDC approval at this time)

Greening Richmond Public Libraries

IMPROVING THE HEALTH OF THE JAMES RIVER BY REDUCING STORMWATER POLLUTION

West End Branch Library

5420 Patterson Avenue, Richmond, 23226

- Legend:**
- Downspout locations
 - Water Meter
 - Gas Meter
 - Electric Meter
 - Site Pole Lights
 - Irrigation Valve
 - Sign
 - Utility Pole
 - Proposed Bioretention Basins
 - Proposed Contours

Existing Trees & Shrubs To Be Preserved:

PLANT SCHEDULE SHOWN ON PAGE TWO

